



LIFAair

LIFAair International Limited

Manufactured by Dongguan LIFAair Technology Ltd.
Address: No. 2, East Industry Road, Songshan Lake Science &
Technology Industrial Park, Dongguan, 523808, CHINA
www.lifaair.com Designed in Finland

LA500V Smart Air Purifier

Please read this user manual carefully before using, and keep for future reference.

Warning: Before using the machine for the first time, you must remove the moisture proof protective bags.

Thank you for choosing LIFAair! You are about to enjoy superior Finnish technology and innovation.

Important safety information

- Only use attachments/accessories provided by the manufacturer.
- Keep the machine away from children to avoid accidents.
- Do not block any ventilation openings. Install the machine in accordance with the manufacturer's instructions.
- Make sure the machine stands in the upright position, never operate the machine when in other orientations.
- Unplug the machine when it will not be used for a long period of time.
- Do not use this machine in rooms with large temperature differences to avoid vapor condensation inside.
- Protect the power cord from being walked on or pinched.
- Please switch off and unplug the machine before moving it or cleaning and/or replacing the filters.
- Do not use this machine in high temperature and/or humidity environments, such as bathrooms.
- Never open the power adapter to avoid electric shock and affecting the warranty.
- For user safety and product protection, do not sit or lean on the machine.
- Do not put any objects into the movable portion, the air inlet and/or outlet.
- Do not place the product directly under air conditioning units to prevent condensed water droplets.
- Please do not attempt to disassemble and repair the product without the presence of professionals to avoid fire, electric shock, and being injured.
- To prevent electric shocks, be sure to follow this manual carefully for cleaning and maintaining. Please do not try to maintain the product otherwise.
- Please ensure to use the power supply unit provided with the appliance only.

Safety marking label of main unit is on the bottom plate of the product.



Use only with the cart, stand, tripod, bracket, or table specified by the manufacturer, or sold with the apparatus. When a cart is used, use caution when moving the cart/apparatus combination to avoid injury from tip-over.



Correct disposal of this product. This marking indicates that this product should not be disposed with other household wastes throughout the EU. To prevent possible harm to the environment or human health from uncontrolled waste disposal, recycle it responsibly to promote the sustainable reuse of material resources. To return your used device, please use the return and collection systems or contact the retailer where the product was purchased. They can take this product for environmental safe recycling.

Power warning:

- Place the product near the power outlet for easy use.
- Before use, make sure that the operating voltage is the same as your local power supply. Correct operating voltage can be found on the product plate.

- For safety purpose, unplug the product during lightning storms or when unused for extended periods of time.
- Under normal conditions, the power supply may get hot. Please keep good ventilation in the area and exercise caution.
- Safety warning labels on the housing or bottom of the product or power adaptor.



This symbol is to alert the user to the presence of un-insulated dangerous voltage within the product's enclosure that may be of sufficient magnitude to constitute a risk of electric shock to persons.



This symbol is to warn the user not to disassemble the enclosure of the product and there is no user-replaceable part inside. Take the product to an authorized service center for repair.



This symbol indicates that the product is for indoor use only.

For wireless product:

1. Wireless product may generate shortwave radio frequencies and interfere with the normal use of other electronic devices or medical equipment.
2. Turn off the product when it's disallowed. Do not use the product in medical facilities, on airplane, at gas stations, near automatic gates, automatic fire alarm system or other automated devices.
3. Do not use the product in the vicinity of a pacemaker within a 20cm range. The radio waves may affect the normal operation of the pacemaker or other medical devices.



WARNING!

Danger of explosion if the battery is incorrectly replaced. Replace only with the same or equivalent type.

For products with removable battery, the battery must be properly recycled or disposed. For products with built-in battery, disassembling is prohibited. Never disassemble, hit with force, squeeze batteries or dispose of batteries in fire. Do not expose batteries in conductive materials, liquid, fire or heat. Do not let metal object contact two battery poles. If the battery looks swollen, leaking, discolored, having odor or any abnormal appearance, stop using it. Do not use the battery after immersed in water. Improper use of battery may lead to explosion or leakage, causing skin burn or other injuries; in the event of battery leakage, handle it with care and immediately dispose of the battery in the manner in compliance with applicable laws and regulations in your locality.

- This appliance can be used by children aged from 8 years and above and persons with reduced physical, sensory or mental capabilities or lack of experience and knowledge if they have been given supervision or instruction concerning use of the appliance in a safe way and understand the hazards involved.
- Children being supervised not to play with the appliance.
- The appliance is only to be used with the unit provided.
- Cleaning and user maintenance shall not be made by children without supervision.
- The appliance must only be supplied at safety extra low voltage corresponding to the marking on the appliance.

- air purifier main unit x1
- composite filter x2
- monitoring controller x1
- power cord x1
- power adapter (for air purifier) x1

- power adapter (for the monitoring controller) x1
- monitoring controller charging cable x1
- instructions manual / certificate x1



air purifier main unit



composite filter
(used inside main unit)

x2



instructions manual /
certificate



monitoring controller



power adapter (for the monitoring
controller)



monitoring controller charging cable



power adapter (for air purifier)

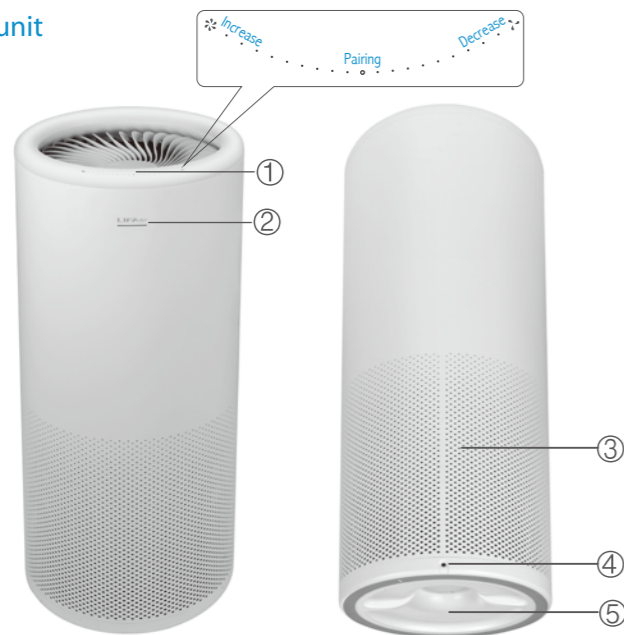


power cord

Function Description

3

Main unit



- ① Touch control circle: change wind speed and enter into pairing mode.
- ② Working status / power indicator light

In the mode of the monitoring controller not connected

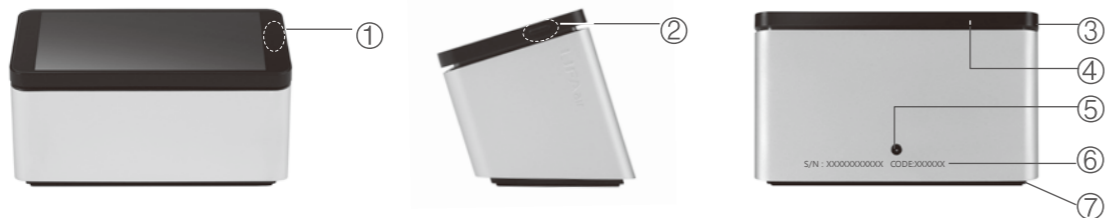
- Green light slowly flash: standby mode
- Green light flashing: response touch control
- Green light rapidly flashing: pairing with controller
- Green light remains steady: operating mode

In the mode of the monitoring controller is connected

- White light slowly flash: standby mode
- White light flashing: response touch control
- White light is on steady: operating mode

- ③ Air intake, 1
- ④ DC power connector (connect to the power adapter)
- ⑤ Bottom cover

Monitoring Controller



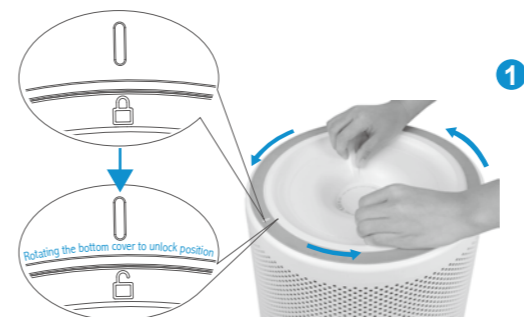
- ① Light sensor: brightness of display automatically adjusts according to ambient brightness.
- ② On / off key: press and hold: switch on/off
press: display time, switch off / on the screen
- ③ Air intake area
- ④ PM2.5 sensor air inlet
- ⑤ Power connector: dedicated charging power cable
- ⑥ S/N code: serial number of the monitoring controller (need to fill in when for warranty)
CODE code: device identification code used to unlock APP remote control function. After searching the monitoring controller with APP, click icon of controller and input this code to open APP remote control function.
Note: 1. This code is not case-sensitive
2. this code is the last six digits of device MAC address).
- ⑦ Exhaust air area

Note: Do not block the intake and exhaust area, pad made by plush fabrics class will clog the exhaust area.

English

Initial Installation

4



① Cover the ground with a soft towel or a protective pad, flip the main unit upside down and rotate the bottom cover to unlock position. Make sure the DC power is cut off.



② Remove the bottom cover.



③ Open the protective bag to find the side handle of the filter and take out the filter.



④ Remove the protective bag of the filter.



⑤ Repeat steps 3 and 4 for the second filter. Orderly put the two filters into the main unit, gently shake them to the right place.

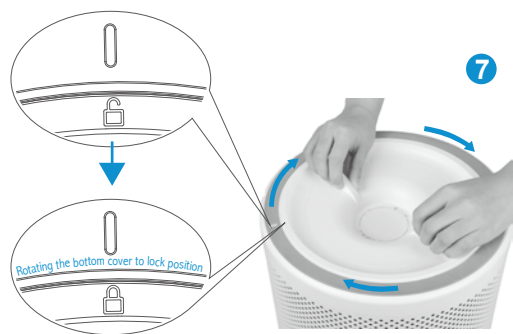


⑥ Close the bottom cover.

English

Initial Installation

5



Lock the bottom cover (be sure to rotate the bottom cover to the lock position).

8



The installation is completed. Flip the main unit carefully back to the upright position.

Connect the power supply



Remove the protective strip on the DC power connector, take out the power cord and connect to the power adapter. Connect the adapter to the main unit and then connect to the power source. The main unit will be in standby mode, LED lights will be flashing slowly.

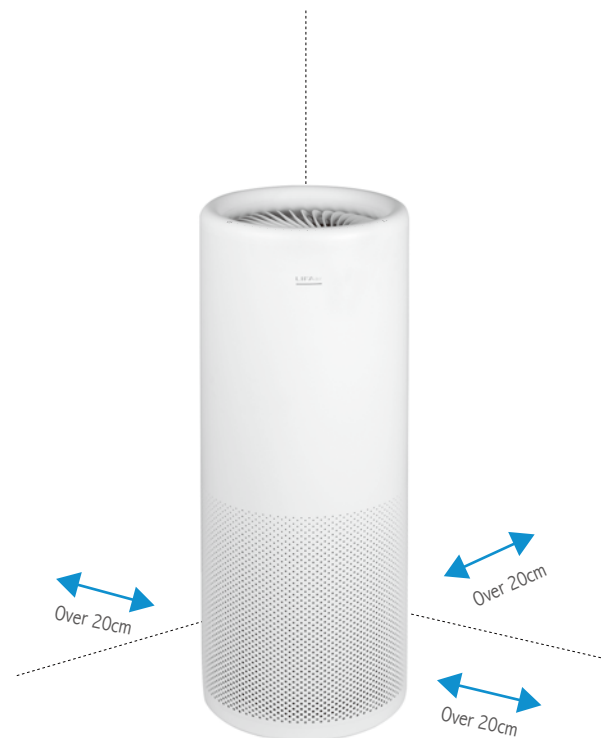


Use

6

Correct positioning

In order to achieve the best possible performance of the air purifier, the air inlets should maintain a certain distance from the walls and other obstructions when using the purifier.



Note: Above diagrams are for reference only, please prevail in kind.

Manually control fan speed

The machine is designed with 121 wind speed and it can precisely control the PM2.5 level.



Touch the top circle of the main unit and rotate clockwise to increase the fan speed (Continuously rotate clockwise until the power light remains constant indicating maximum fan speed.)



Touch the top circle of the main unit and rotate counter-clockwise to reduce fan speed (Continuously rotate counter-clockwise until the power light blinks slowly in a breathing pattern for zero fan speed and enter standby mode).

The Monitoring Controller Pairing with the Main Unit



Pairing

The monitoring controller can be connected to the main unit via Bluetooth. This machine has been paired at the factory, therefore you can directly plug to use. If you require pairing, please follow the steps below.

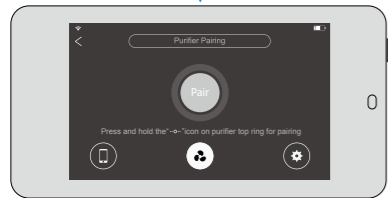


1. Press and hold on/off button on the monitoring controller to turn on the controller, the main unit displays a green light.

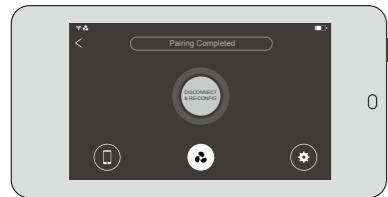


2. Slide the touch circle counter-clockwise so that the green light blinks slowly, with one finger press and hold on the "o" position on the touch ring for more than five seconds until the green light flashes rapidly. Now the main unit will be ready for pairing for 30 seconds.

NOTE: When pairing, the main unit must be in the standby mode (i.e. green light blinks slowly in a breathing pattern).



3. Click settings on the screen → Pair, the monitoring controller and the main unit will start the pairing process.



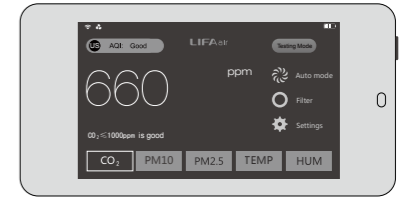
4. If the pairing is successful, the main unit power/status indicator turns white and the monitor shows "Pairing Completed". If the pairing fails, please repeat all the steps above.

Note: Due to product updates and software upgrades, the description here may not match the user interface, please prevail in hand.

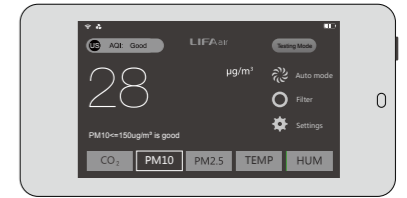
The Monitoring Controller Testing Items



Your smart air purifier the monitoring controller can monitor carbon dioxide (CO₂) concentration, PM10 concentration, PM2.5 concentration, and automatically remote the purification to reduce the PM2.5 concentration in the healthy range. After pairing with the main unit, it can also monitor the temperature and humidity. The monitoring controller will monitor the air quality and classify it into six classes: Good, moderate, unhealthy for sensitive groups, unhealthy, very unhealthy and hazardous.



Click "CO₂" to display the concentration of carbon dioxide. It takes approximately 40 seconds for the meter to stabilize. 1000 ppm or less is good. If 1100 ppm is exceeded, it is recommended to open the window(s) for ventilation.



Click "PM10" to display real-time measurements of PM10. It takes approximately 20 seconds to stabilize the measurement. 150 µg/m³ or less is good



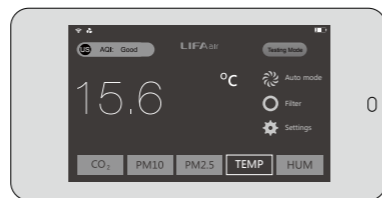
Click "PM2.5" to display real-time measurements of PM2.5. It takes approximately 20 seconds to stabilize the measurement. China Standard 75 µg/m³ or less is moderate; American standard is 35 µg/m³ or less is moderate.

Note: PM2.5 sensor is at the top left corner behind the screen. For measuring the PM2.5 concentration of the airflow, this point should align with the airflow direction.

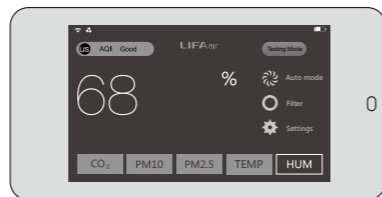
The Monitoring Controller Testing Items

9

Click "TEMP" to show the temperature in the position of the purifier.

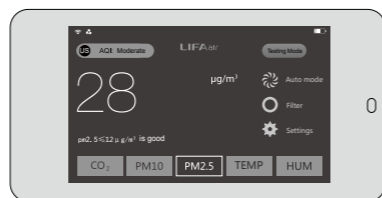


Click "HUM" to show the relative humidity in the position of the purifier.



Continuous Short-term Monitoring of the Monitoring Controller

Click "Testing Mode" and the monitoring controller will continuously monitor the air quality for 5 minutes (otherwise the measurement takes place in regular cycles). Clicking another part of the screen will monitor controller measuring the air quality continuously for only one minute.










The monitoring controller is paired with the main unit (white light indicated) even if the screen only displays the time (plugged in) or black screen (battery powered). The monitoring controller will automatically and regularly monitor the air quality and control the operation of the main unit according to these measurements.

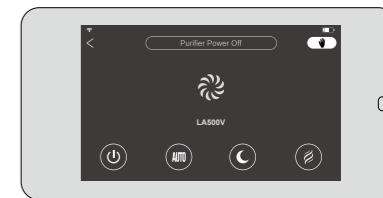
How to Operate the Monitoring Controller

To enable full autonomous operation, please ensure the monitoring controller is connected to the main unit.

10




1. Control panel: Click to enter the mode selection interface

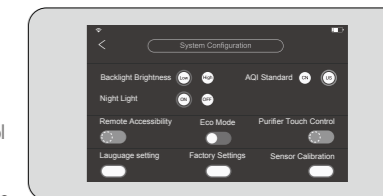
-  Purifier power off
-  Auto mode: According to the real-time indoor air quality, smart auto-adjustment of the main unit's fan speed (recommended mode)
-  Sleep mode: Ultra-low noise operation to create a comfortable sleeping environment (non-smart mode, the main unit continues to run at this speed)
-  Turbo mode: Run at full speed, rapid purification (non-smart mode, fast run for 90 minutes followed by automatic switching to the medium speed)
-  Manual mode: You can manually adjust the fan speed of the main unit
click  to return to the mode selection interface
click  to return to the homepage of the monitoring controller



The main unit can be manually controlled by touching the control circle to change the wind speed when the light is white. However, after 5 minutes it will return back to the default (AUTO) mode. "Auto" mode saves energy and prolongs the filter life. It is possible to permanently control the fan speed manually by either turning the monitor controller into a manual mode or by disconnecting the monitoring controller with the main unit. After disconnection you can control the fan speed from the main unit's touch circle permanently. This way the main unit's fan will not go back into the "Auto" mode. It is recommended to use the "Auto" mode, since it saves money and energy and prolongs the filter life.

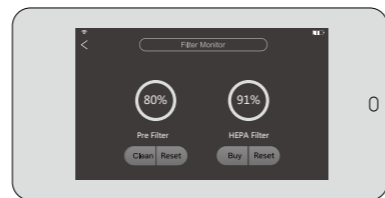
2. Click to enter to the System Configuration

- Backlight Brightness: LOW → dark mode; high → bright mode. In both modes, light sensor automatically adjusts the brightness according to the environment
- AQI Standard : Select the air quality standards (CN or US standard) as the control standard. By selecting the US standard, the purifier will work more efficiently especially at night.
- Night Light : Turn on or off nightlight function. When this function is turned on, touching the screen will create high intensity illumination for 3 minutes (can be used as a nightlight) between 22:00-6:00.
- Remote Accessibility: Allow or disable the phone APP to operate the main unit. In the disabled state the phone APP can only view the measurement data but not control the main unit.
- ECO mode : Turn on or off the smart ventilation detection function. After turning on, the operating mode will be subject to status of window control, to achieve energy-saving effects and reduce the use of filters (because when the window opened, whether air quality meets standard or not, the running of air purifier would be meaningless).
- Purifier Touch Lock : Turn on or off the touch function to prevent the inadvertent touching from others.
- Language settings:  → Chinese language;  → Traditional Chinese;  → English language
- Factory settings : Clicking "Confirm" will reset all monitor settings to factory defaults and the Wi-Fi connection will be cut off. Connection to the main unit remains via Bluetooth.
- Sensor Calibration : Perform the calibration of the monitor controller's sensors according to the instructions on the screen to ensure the accuracy of the sensors.



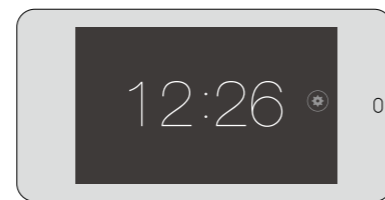
3. Filter monitor

Click Filter → enter the filter monitoring interface
Please replace the filters when the percentage is approaching 5%.
After replacing the filter, please click "Reset" and Confirm in order to restart the intelligent monitoring of the new filter(s).



4. The clock display / adjustment

- In the case of an external power supply situation, having no operation for long time (approximately 60 seconds) or pressing the on/off button of the monitoring controller, the screen will automatically display the time (when using the battery power, the screen does not display the time). If you turn on night light function during 22:00 - 06:00, the touch screen will display the clock in white background and black numbers for three minutes.
- On clock display screen, click on the right side to manually set the time. After completing the setup, click to save the current time settings.

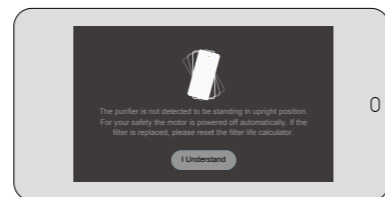


Note: The controller will automatically sync to local time zone once connected to Wi-Fi via cloud server. Please note this function may be not applicable in certain areas, please set time manually if so.

Warning

Main unit's imbalance warnings:

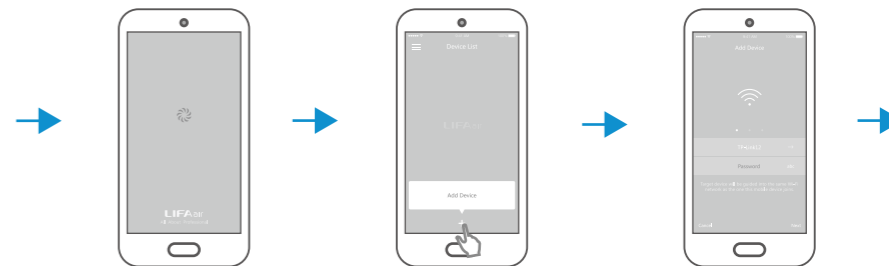
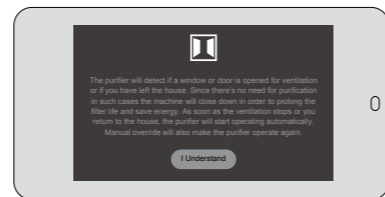
The main unit must not be tilted while it is operating. In case it is not standing in an upright position, this text will be displayed on the screen.



Ventilation warning:

The purifier will detect if a window or door is opened for ventilation of if you have left the apartment. When such abnormality is detected, this screen will appear. The main unit will stop working when a window is opened to save energy and prolong the filter life. After the ventilation is completed, the doors and windows are closed or you have returned home, click (auto mode) → sleep mode (M) auto mode, to restore the smart operation. You can also directly touch and slide the main unit's touch control panel to make it start purifying the air.

Note: The monitor controller will detect the "ventilation" status only when it runs on the "AUTO" mode.

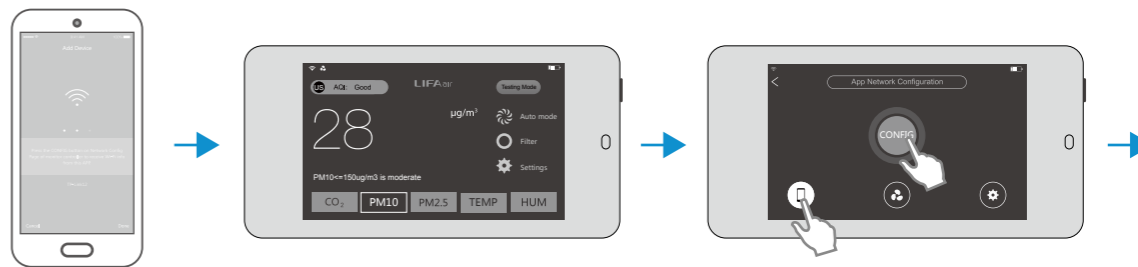


Scan the above QR code using smart phone to be re-directed. The same QR code can also be found at the bottom of the monitoring controller.

Download and install the APP

Open the LIFAir App, press the "+" on the phone screen

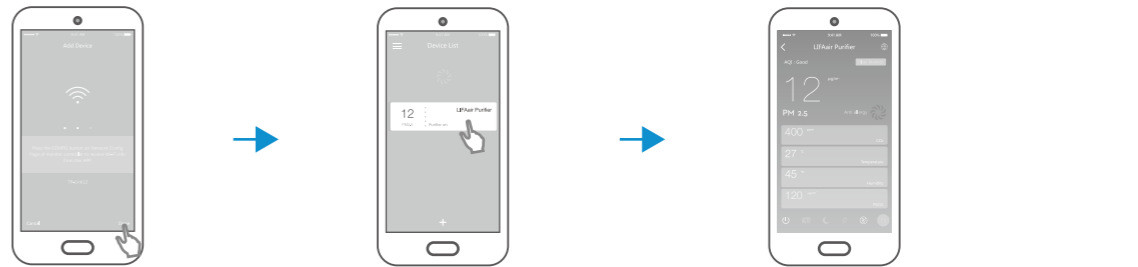
Make sure your phone is connected to the Wi-Fi network you would like your monitoring controller to connect to.



Based on the prompt, click CONNECT network

Click on settings on the monitoring controller

Select → Click CONFIG

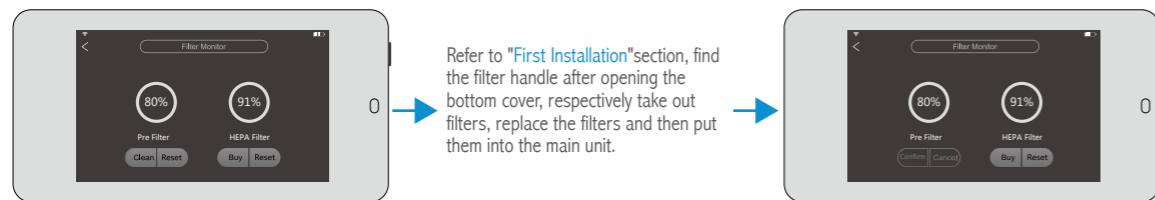


Press "Done" on your smartphone.

After successfully connecting the internet, click the link to the monitors. Input the monitoring controller password (last six digits of CODE, showed below the DC interface in the rear of the monitoring controller. It is not case sensitive)

After a successful connection, the phone can control the main unit, and simultaneously display the current data in the monitoring controller

Filter Change (be sure the main unit is not operating, unplug the power cord and then proceed to clean/replace filters)



Refer to "First Installation" section, find the filter handle after opening the bottom cover, respectively take out filters, replace the filters and then put them into the main unit.

Replace the filters

Filter Reset

When the filter detection value in the monitoring controller is less than 5%, you need to clean or replace the filter

Prefilter Cleaning



Prefilter Cleaning: take out the two filters from the main unit, clean it in outdoor using a dry cleaner equipped with brush. Clean the dust on the outer surface of filters. Upon completion of cleaning, put filters back into the main unit, press the "Reset" button below the "Pre Filter" to confirm.

Note: Do not use a wet towel to clean the pre filter to avoid clogging the pre filter.

Product Name: Smart Air Purifier
 Model number: LA500V
 Clean Air Delivery Rate for particle (CADR particulate matter): 600m³/h
 Cumulate Clean Mass for particle (CCM particulate matter): P4 level
 Particle Removal Efficiency: high efficient level
 Clean Air Delivery Rate for formaldehyde (CADR formaldehyde): 190m³/h
 Cumulate Clean Mass for formaldehyde (CCM formaldehyde): F4 level

Frequency Band (Wi-Fi): 2.412GHz-2.484GHz
 Frequency Band (Bluetooth): 2.402GHz-2.480GHz
 RF Power output: ≤ 20 dBm (EIRP)

There is no restriction of use.

Note: for application area, it is in accordance with GB/T18801-2015 calculated based on the value of CADR for particle. Performance data above are in accordance with GB/T18801-2015 tested by the third-party laboratories by using particular soot particles or gaseous pollutants as targeted pollutants.

Formaldehyde Removal Efficiency: high efficient level
 Noise: ≤ 66dB (A)
 Recommended application area: 42m² ~ 72m²
 PM2.5 sensor: Laser type
 CO₂ sensor: Dual thermopile type
 Temperature / Humidity Sensor: Semiconductor + Thermal Resistance type

Troubleshooting

Purifier not working?

Please check whether the power cord is correctly connected.
 Please check whether the purifier is in minimum wind speed.
 Please check whether the bottom cover is in the lock position.

Running noise?

Please check whether the filter is installed.
 Please check whether the protective bags of the filter have been removed.

Unable to connect the monitoring controller to the main unit?

Please follow the step-by-step instructions on page 7 "Pairing" to connect.

Carbon dioxide has inaccurate readings?

Please use the following process:

⚙️ Settings → sensor calibration, according to the standard method of reset in outdoors for 30 minutes, use the "Testing Mode" when turn on the monitoring controller, and then perform reset for carbon dioxide sensor respectively.

Customer Service – International

If you have any questions, please contact us at care@lifa-air.com or visit us at www.lifaair.com

Please note: All right to change or modify the product without prior notice are reserved.

LoveAir

Bedienungsanleitung heruntergeladen
von der Website loveair.de